

# Relief of Profound Feedback Inhibition of Mitogenic Signaling by RAF Inhibitors Attenuates Their Activity in BRAFV600E Melanomas

Piro Lito,<sup>1,2,7</sup> Christine A. Pratilas,<sup>1,3,7</sup> Eric W. Joseph,<sup>1,7</sup> Madhavi Tadi,<sup>1</sup> Ensar Halilovic,<sup>6</sup> Matthew Zubrowski,<sup>6</sup> Alan Huang,<sup>6</sup> Wai Lin Wong,<sup>1</sup> Margaret K. Callahan,<sup>2</sup> Taha Merghoub,<sup>2,4</sup> Jedd D. Wolchok,<sup>2,4</sup> Elisa de Stanchina,<sup>1</sup> Sarat Chandralapathy,<sup>2,5</sup> Poulikos I. Poulikakos,<sup>1</sup> James A. Fagin,<sup>2,5</sup> and Neal Rosen<sup>1,2,\*</sup>

<sup>1</sup>Molecular Pharmacology and Chemistry Program

<sup>2</sup>Department of Medicine

<sup>3</sup>Department of Pediatrics

<sup>4</sup>Ludwig Center for Cancer Immunotherapy

<sup>5</sup>Human Oncology and Pathogenesis Program

Memorial Sloan-Kettering Cancer Center, New York, NY 10065, USA

<sup>6</sup>Novartis Institutes for BioMedical Research, Cambridge, MA 02139, USA

<sup>7</sup>These authors contributed equally to this work

\*Correspondence: [rosenn@mskcc.org](mailto:rosenn@mskcc.org)

<http://dx.doi.org/10.1016/j.ccr.2012.10.009>

## SUMMARY

BRAF<sup>V600E</sup> drives tumors by dysregulating ERK signaling. In these tumors, we show that high levels of ERK-dependent negative feedback potently suppress ligand-dependent mitogenic signaling and Ras function. BRAF<sup>V600E</sup> activation is Ras independent and it signals as a RAF-inhibitor-sensitive monomer. RAF inhibitors potently inhibit RAF monomers and ERK signaling, causing relief of ERK-dependent feedback, reactivation of ligand-dependent signal transduction, increased Ras-GTP, and generation of RAF-inhibitor-resistant RAF dimers. This results in a rebound in ERK activity and culminates in a new steady state, wherein ERK signaling is elevated compared to its initial nadir after RAF inhibition. In this state, ERK signaling is RAF inhibitor resistant, and MEK inhibitor sensitive, and combined inhibition results in enhancement of ERK pathway inhibition and antitumor activity.

## INTRODUCTION

ERK signaling plays an important role in regulating pleiotypic cellular functions. Activation of receptor tyrosine kinases (RTKs) causes Ras to adopt an active, guanosine triphosphate (GTP)-bound conformation (Downward, 2003) in which it induces the dimerization and activation of members of the RAF kinase family (Wellbrock et al., 2004a). Activated RAF phosphorylates and activates MEK1/2; these phosphorylate and activate ERK1/2, which regulate cellular function by phosphorylating multiple substrates. A complex network of negative-feedback interactions limits the amplitude and duration of ERK signaling.

Negative feedback is mediated directly by ERK-dependent inhibitory phosphorylation of components of the pathway, including epidermal growth factor receptor (EGFR), SOS, and RAF (Avraham and Yarden, 2011; Dougherty et al., 2005; Duvillie and Downward, 1997). In addition, ERK activation induces the expression of proteins that negatively regulate the pathway, including members of the Sprouty (Spry) and dual specificity phosphatase (DUSP) families (Eblaghie et al., 2003; Hanafusa et al., 2002).

ERK activation is a common feature of tumors with KRas, NRas, or BRAF mutation, or dysregulation of RTKs (Solit and Rosen, 2011). Tumors with BRAF mutation and some with RAS

### Significance

The resistance of BRAF<sup>V600E</sup> to ERK-dependent feedback is key to its transforming activity and for the effectiveness of RAF inhibitors. In BRAF<sup>V600E</sup> melanomas, elevated ERK-dependent feedback suppresses signaling by growth factors; Ras activity is low and BRAF<sup>V600E</sup> functions as a monomer. RAF inhibitors potently inhibit RAF monomers, but not dimers and thus are active in these tumors. However, ERK inhibition rapidly relieves feedback and sensitizes the cell to ligand-dependent signaling, leading to a rebound in Ras activity and ERK signaling. The degree of rebound is variable and predicted to determine the sensitivity of the tumor to the inhibitor. Inhibiting RAF-inhibitor-induced pathway reactivation with MEK inhibitors or inhibitors of the relevant ligand-activated receptors will be required for maximal antitumor activity.

mutation are sensitive to MEK inhibitors (Sebolt-Leopold et al., 1999; Leboeuf et al., 2008; Pratilas et al., 2008; Solit et al., 2006). However, these drugs inhibit ERK signaling in all cells, and toxicity to normal tissue limits their dosing and their therapeutic effects (Kirkwood et al., 2012).

ATP-competitive RAF inhibitors have also been developed (Bollag et al., 2010). The biologic effects of MEK inhibitors and RAF inhibitors in BRAF<sup>V600E</sup> melanomas are similar. However, RAF inhibitors effectively inhibit ERK signaling only in tumors with mutant BRAF (Hatzivassiliou et al., 2010; Heidorn et al., 2010; Joseph et al., 2010; Poulikakos et al., 2010). In cells with wild-type (WT) BRAF, Ras activation supports the formation of Ras-dependent RAF dimers. Binding of RAF inhibitors to one protomer in the dimer allosterically transactivates the other and causes activation of ERK signaling in these cells (Poulikakos et al., 2010). We hypothesized that, in BRAF<sup>V600E</sup> tumors, levels of Ras activity are too low to support the formation of functional dimers, so that BRAF<sup>V600E</sup> is primarily monomeric and inhibited by the drug. This mutation-specific pathway inhibition by the drug gives it a broad therapeutic index and likely accounts for its remarkable antitumor effects in melanomas with BRAF mutation (Chapman et al., 2011; Sosman et al., 2012). In support of this model, acquired resistance to RAF inhibitors is due to lesions that increase Ras activity, e.g., NRAS mutation or RTK activation (Nazarian et al., 2010), and to aberrantly spliced forms of BRAF<sup>V600E</sup> that dimerize in a Ras-independent manner (Poulikakos et al., 2011).

We have now endeavored to test the hypothesis that the levels of Ras activity in BRAF<sup>V600E</sup> melanomas are too low to support significant expression of active RAF dimers and to elucidate the mechanism underlying this phenomenon and its biologic and therapeutic consequences.

## RESULTS

### In BRAF<sup>V600E</sup> Melanomas, Ras Activation Is Suppressed by ERK-Dependent Feedback

Assessment of BRAF<sup>V600E</sup> melanoma cells confirmed that they have low levels of GTP-bound Ras (Figure 1A; Figure S1A available online). As expected, Ras-GTP levels were most elevated in tumor cells with mutant Ras and were lower in cells in which ERK signaling is driven by RTKs. Ras-GTP levels were significantly lower in melanoma cell lines harboring BRAF<sup>V600E</sup> and could be detected only when immunoblots were overexposed (Figure 1A).

We investigated whether low Ras activity is due to high levels of ERK signaling. We have shown that ERK-dependent transcriptional output is markedly elevated in BRAF<sup>V600E</sup> melanomas (Joseph et al., 2010; Pratilas et al., 2009) and includes Spry proteins, which suppress the activation of Ras by various RTKs. This suggests that ERK-dependent feedback inhibition of receptor signaling causes suppression of Ras activation in these tumors. Pharmacologic inhibition of RAF or MEK led to induction of Ras-GTP to varying degrees in BRAF<sup>V600E</sup> tumors (Figures 1B, 1C, and S1B), with induction beginning 4–8 hr after drug addition and reaching a steady state 24 hr after pathway inhibition (Figure 1B). Although marked induction of Ras-GTP occurred, levels remained significantly lower than those observed in tumor cells with EGFR activation (Figure S1C). These

findings show that ERK-dependent feedback suppresses Ras activity in BRAF<sup>V600E</sup> melanomas and are consistent with the idea that BRAF<sup>V600E</sup> signals in a Ras-independent manner.

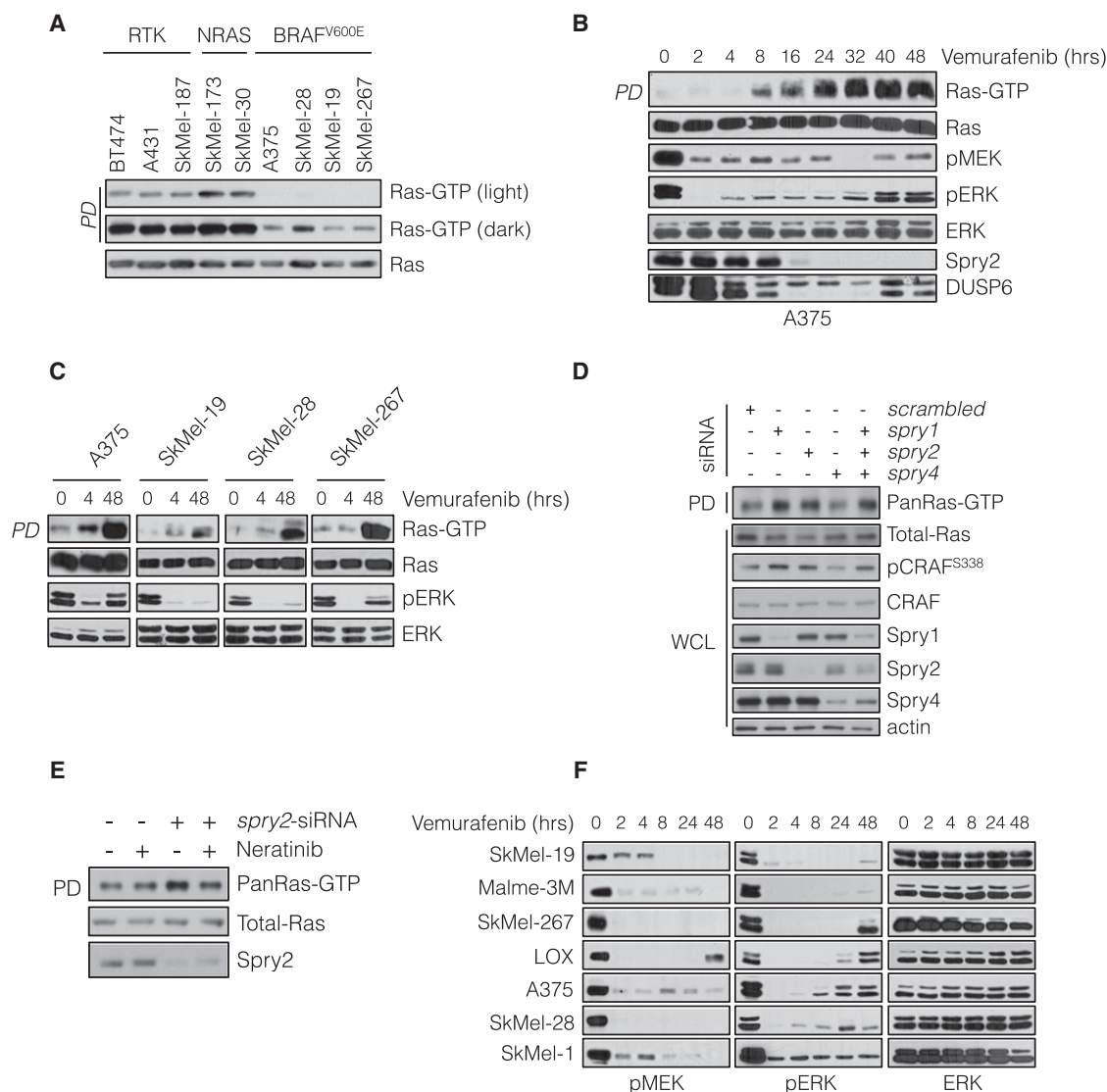
Induction of Ras-GTP correlated with decreasing levels of Spry proteins and the ERK phosphatase DUSP6 (Figures 1B and S1C). Spry proteins inhibit RTK signaling, in part by binding to Grb2 and sequestering the Grb2:SOS complex so it cannot bind RTKs (Kim and Bar-Sagi, 2004; Mason et al., 2006). In BRAF<sup>V600E</sup> melanomas, Spry1, 2, and 4 are overexpressed in an ERK-dependent manner (Figure S1D). To determine whether Spry overexpression contributes to feedback inhibition of Ras, we knocked down the expression of Spry1, 2, and 4 with small interfering RNA (siRNAs), and Ras-GTP was assessed 48 hr later. Downregulation of either Spry1 or Spry2 increased total (pan) Ras-GTP levels, whereas knockdown of Spry 4 had no effect. Spry2 knockdown resulted in induction of HRas, NRas, and KRas-GTP, while Spry1 and 4 downregulation appeared to induce HRas-GTP alone (Figures 1D and S1E; data not shown). Knockdown of all three isoforms did not result in greater induction of Ras-GTP than knockdown of Spry2 alone (Figures 1D and S1E). Induction of Ras-GTP in these cells was associated with increased phosphorylation of CRAF<sup>S338</sup>, a modification associated with CRAF activation. These data suggest that ERK-dependent feedback inhibition of Ras activation is mediated, in part, by expression of Spry proteins.

We hypothesized that Spry proteins block activation of Ras by interfering with RTK signaling. Since A375 melanoma cells express EGFR and respond to its ligands (see below), we tested whether the effect of Spry2 knockdown was reversed by neratinib, an irreversible inhibitor of EGFR/HER kinases. Neratinib had no effect on Ras-GTP in A375 cells, but reduced the Ras-GTP increase induced by Spry2 knockdown (Figure 1E). This supports the idea that ERK-dependent expression of Spry2 blocks RTK-dependent activation of Ras.

### Induction of Ras-GTP by RAF Inhibitors Is Accompanied by a Rebound in Phospho-ERK

Increased Ras-GTP should be accompanied by an increase in RAF-inhibitor-resistant RAF dimers and a concomitant increase in pERK and ERK signaling. After initial inhibition of ERK phosphorylation in seven BRAF<sup>V600E</sup> melanomas treated with the RAF inhibitor, we observed a pronounced rebound in four cell lines, and a more marginal rebound in two others (Figure 1F). The pERK rebound was also elicited by dabrafenib, a more potent RAF inhibitor (Figure S1F). The rebound was preceded by loss of ERK-dependent inhibitory phosphorylation of CRAF at S289, S298, and S301 and was associated with an induction of the CRAF S338 activating phosphorylation and a slight induction of pMEK, detected in A375 cells (Figures S1F and S1G) but not in all the cell lines.

The rebound in pERK was accompanied by increased expression of genes previously shown to be ERK-dependent in BRAF<sup>V600E</sup> melanomas (Figures S1H–S1L). The magnitude of pERK reactivation varied across the melanomas examined, but pERK levels reached a steady state that was maintained for at least 7 days (data not shown). The magnitude of ERK reactivation was less pronounced in melanomas than in colorectal and thyroid carcinomas harboring BRAF<sup>V600E</sup> (J.A.F., unpublished data).



**Figure 1. BRAF<sup>V600E</sup> Melanomas Maintain a State of Low Ras-GTP through Negative-Feedback Regulation**

(A) Whole-cell lysates (WCLs) from the indicated cell lines were subjected to pull-down (PD) assays with GST-bound CRAF Ras-binding domain (RBD). WCL and PD products were immunoblotted (IB) with a pan-Ras antibody.

(B and C) BRAF-mutated melanoma cell lines were treated with vemurafenib (2  $\mu$ M) for the indicated times. Ras-GTP was detected as in (A). Phospho and total levels of ERK pathway components were assayed by IB.

(D) A375 cells (BRAF<sup>V600E</sup>) were transfected with siRNA pools targeting the indicated Spry isoforms or scrambled oligonucleotides. WCLs were subjected to GST-RBD PD and analyzed by IB for the indicated proteins.

(E) A375 cells were transfected with *spry2* siRNA and 48 hr after transfection they were treated with neratinib (1  $\mu$ M) for 1 hr. Ras-GTP levels were determined as above.

(F) BRAF<sup>V600E</sup> melanoma cell lines were treated with vemurafenib (2  $\mu$ M) for various times. The effect on ERK signaling is shown.

See also Figure S1.

We examined whether pERK rebound required Ras activation. Knockdown of Ras isoforms by siRNA had little effect on baseline pERK, but decreased the residual pERK in A375 and SkMel-28 cells treated with vemurafenib (Figure 2A). These results confirm that ERK signaling is Ras independent in BRAF-mutated melanomas, but that ERK rebound after RAF inhibition is Ras dependent. Since activation of WT Ras requires exchange factor activity, we asked whether rebound required SOS1, a Ras-specific guanine nucleotide exchange factor that

is inhibited by Spry (Nimnual and Bar-Sagi, 2002). Down-regulation of SOS1 in A375 cells diminished pERK rebound after inhibition with vemurafenib without affecting baseline pERK (Figure 2B).

#### ERK Rebound Is Dependent on Expression of CRAF-Containing Dimers that Are Resistant to RAF Inhibition

Our data suggest that relief of ERK-dependent feedback inhibition of Ras activity diminishes the effect of RAF inhibitors. To

support this idea, we asked whether MEK inhibitors increase Ras activation and cause resistance to RAF inhibitors. The MEK inhibitor (PD0325901) inhibited ERK phosphorylation and induced Ras-GTP levels within 24 hr of addition (Figures 2C and S1B). With this in mind, we asked if relief of feedback by MEK inhibitors affected vemurafenib inhibition of MEK phosphorylation. Vemurafenib treatment for 1 hr potentially inhibited pMEK in untreated BRAF<sup>V600E</sup> melanomas and in those cells exposed to the MEK inhibitor for up to 12 hr, at which time Ras-GTP had not increased appreciably (Figure 2C). After 24 and 48 hr of exposure, however, Ras-GTP was induced and inhibition of pMEK by the RAF inhibitor was much less effective (Figures 2C and S2A–S2C). Similar results were achieved with different MEK (trametinib) and RAF (dabrafenib) inhibitors (Figure S2B).

These data support the idea that relief of ERK-dependent feedback increases the level of Ras-dependent RAF dimers. This turned out to be the case. As measured by coimmunoprecipitation of endogenous proteins, the MEK inhibitor increased CRAF:BRAF dimers at times that correlated with induction of Ras-GTP and RAF inhibitor resistance (12–48 hr, Figures 2D and S2C).

Spry proteins suppressed RTK-induced Ras activation in BRAF<sup>V600E</sup> melanomas. We asked if Spry expression was required for maximal inhibition of RAF. In A375 melanoma cells, knockdown of Spry1–4 reduced the degree of acute inhibition of MEK phosphorylation by vemurafenib (Figure 2E). A similar result was obtained when Spry2 was knocked down alone (Figure S2D). These findings suggest that Spry overexpression contributes to maximal RAF inhibition in BRAF melanomas.

If formation of RAF dimers is responsible for rebound in ERK phosphorylation in tumors treated with RAF inhibitors, ERK rebound should be CRAF dependent. As previously shown (Hingorani et al., 2003; Wellbrock et al., 2004b), knockdown of CRAF expression had no effect on ERK signaling in A375 cells (Figure 2F). In contrast, in tumors treated with RAF inhibitors, residual pERK was significantly reduced when CRAF expression was reduced by siRNA (Figure 2F).

Together, these data suggest that relief of ERK-dependent feedback by MEK or RAF inhibitors induces Ras-GTP and the formation of CRAF-containing dimers that are insensitive to the RAF inhibitor. If ERK-rebound is driven by these dimers, it should be sensitive to MEK inhibitors, but not to RAF inhibitors (Poulikakos et al., 2010). We tested this assertion in BRAF<sup>V600E</sup> melanoma cell lines treated with vemurafenib (Figure 2G). In these cell lines, vemurafenib caused maximal inhibition of pERK within 2 hours of inhibition, and rebound occurred within 8 hours. ERK-rebound was insensitive to retreatment with vemurafenib, 24 hr after the initial treatment, but was sensitive to MEK inhibition. Similar findings were observed when the experiment was repeated with the other MEK and RAF inhibitors (Figure S2E). These data support the idea that relief of ERK-dependent feedback leads to a rebound in pERK and a new steady state in which the pathway is driven by RAF dimers that are insensitive to RAF inhibition.

Our data show that relief of feedback inhibition of Ras is necessary for induction of ERK rebound. Overexpression of the ERK phosphatase DUSP6 is a property of BRAF<sup>V600E</sup> melanomas and rapidly decreases after RAF inhibition. We asked whether downregulation of DUSP6 also contributed to ERK

rebound. A375 cells were transfected with DUSP6-specific siRNAs and then treated with vemurafenib. Knocking down DUSP6 resulted in increased residual pERK following RAF inhibition, without significant differences in residual pMEK (Figure S2F). This suggests the decrease in DUSP6 expression plays a permissive role in pERK rebound following RAF inhibition.

We asked if relief of PI3K or mTOR pathway feedback also affected inhibition of MEK phosphorylation by vemurafenib. A375 cells were treated with selective inhibitors of MEK, ERK, mTOR kinase, AKT, or PI3K for 48 hr, followed by treatment with vemurafenib to assess inhibition of MEK phosphorylation by RAF. Inhibiting MEK or ERK, prevented inhibition of MEK phosphorylation by vemurafenib. This was associated with loss of Spry2 expression and induction of CRAF<sup>S338</sup> (Figure 2H). Inhibition of PI3K, AKT, or mTOR kinase did not affect sensitivity to vemurafenib, Spry2 expression, or pCRAF. The mTOR kinase inhibitor did not affect vemurafenib inhibition even though it relieved feedback inhibition of signaling to pAKT<sup>T308</sup>. Thus, maximal effectiveness of RAF inhibitors specifically requires intact ERK-dependent feedback.

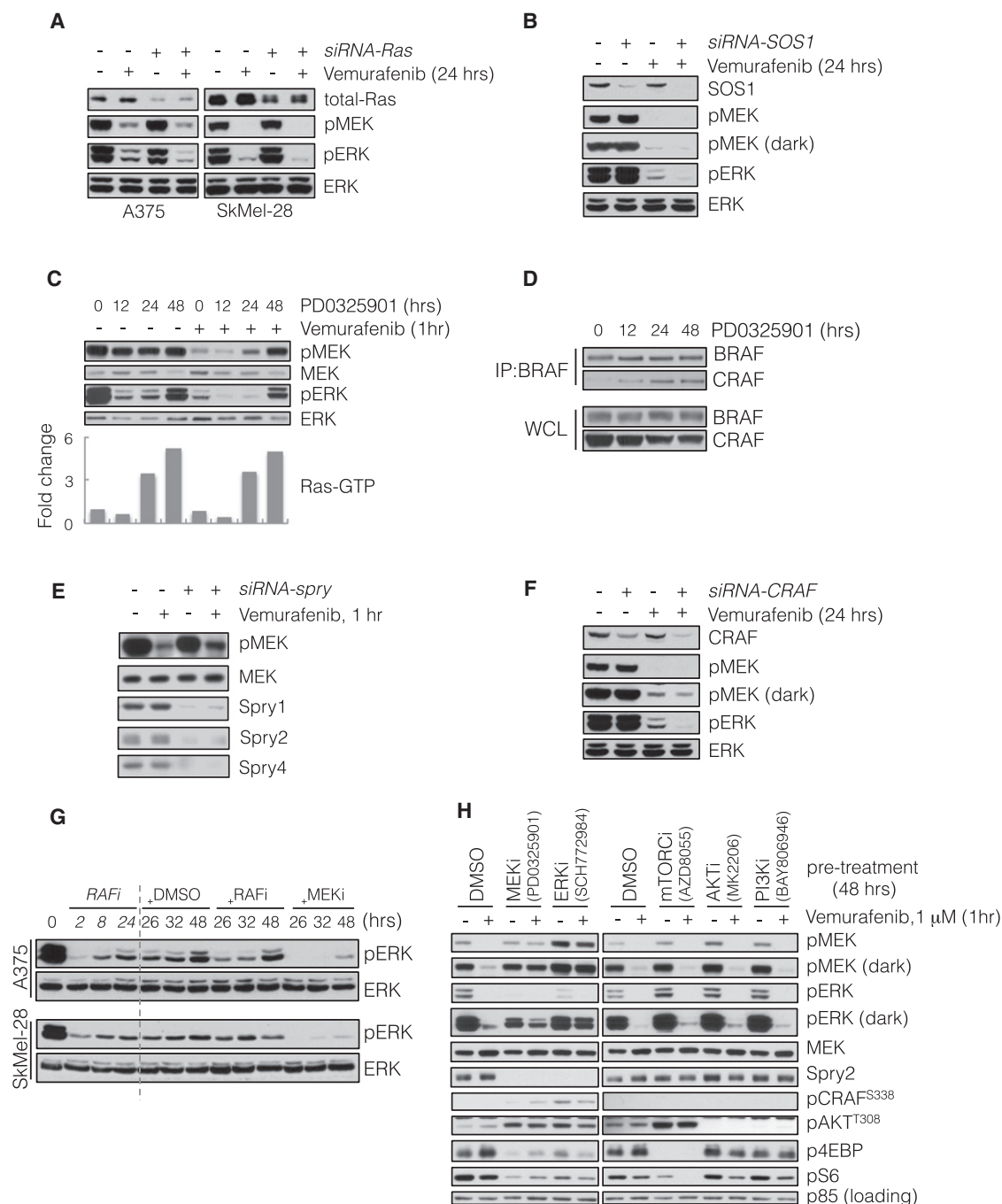
### Inhibition of ERK Rebound with MEK Inhibitors Enhances the Suppression of ERK Output and Tumor Growth by RAF Inhibitors

Since ERK phosphorylation and output were reactivated in a MEK-dependent manner in tumors exposed to RAF inhibitors, we examined whether concurrent RAF and MEK inhibition resulted in better inhibition of the pathway and tumor growth. As compared to treatment with either agent alone (Figure S3A), ERK phosphorylation was inhibited to greater degree in BRAF<sup>V600E</sup> melanomas exposed to vemurafenib and a low concentration of PD0325901 (5 nM). The combination of dabrafenib and trametinib also inhibited the growth of A375 cells in culture better than either drug alone (Figure S3B).

We tested the effectiveness of combining RAF and MEK inhibitors in vivo in four BRAF<sup>V600E</sup> melanoma mouse xenograft models (Figure 3A). These experiments were done with an effective dose (12.5 mg/kg) of PLX4720, which is closely related to vemurafenib but easier to formulate (Tsai et al., 2008), and a low dose (2 mg/kg) of PD0325901. Each inhibitor was effective alone (Figure 3A), with regression observed in approximately 50% of animals in either arm. In contrast, combined therapy caused regression of all but one tumor (25/26). Figures S3C–S3F show tumor responses over 4 weeks of treatment. The combination of RAF and MEK inhibitors was effective in SkMel-28 and SkMel-267 xenografts (Figures S3C and S3D). In A375 and LOX xenografts (Figures S3E and S3F), the addition of MEK inhibitor did not significantly improve tumor growth inhibition initially, but did delay tumor regrowth following prolonged treatment.

We repeated the experiment with a higher dose of PLX4720 (50 mg/kg) in SkMel-267 and SkMel-28 xenografts and found that the combination of RAF and MEK inhibition was still superior to either drug alone (Figures 3B and 3C). Flow-cytometric analysis of tumor-derived cells from SkMel-28 xenografts revealed that more than 50% of ERK remained phosphorylated after single agent inhibition of RAF or MEK alone (Figure 3D). The combination, however, resulted in a near complete ERK inhibition. Taken together, these results suggest that combined





**Figure 2. ERK Rebound Is Dependent on Formation of CRAF-Containing Dimers that Are Resistant to RAF Inhibition**

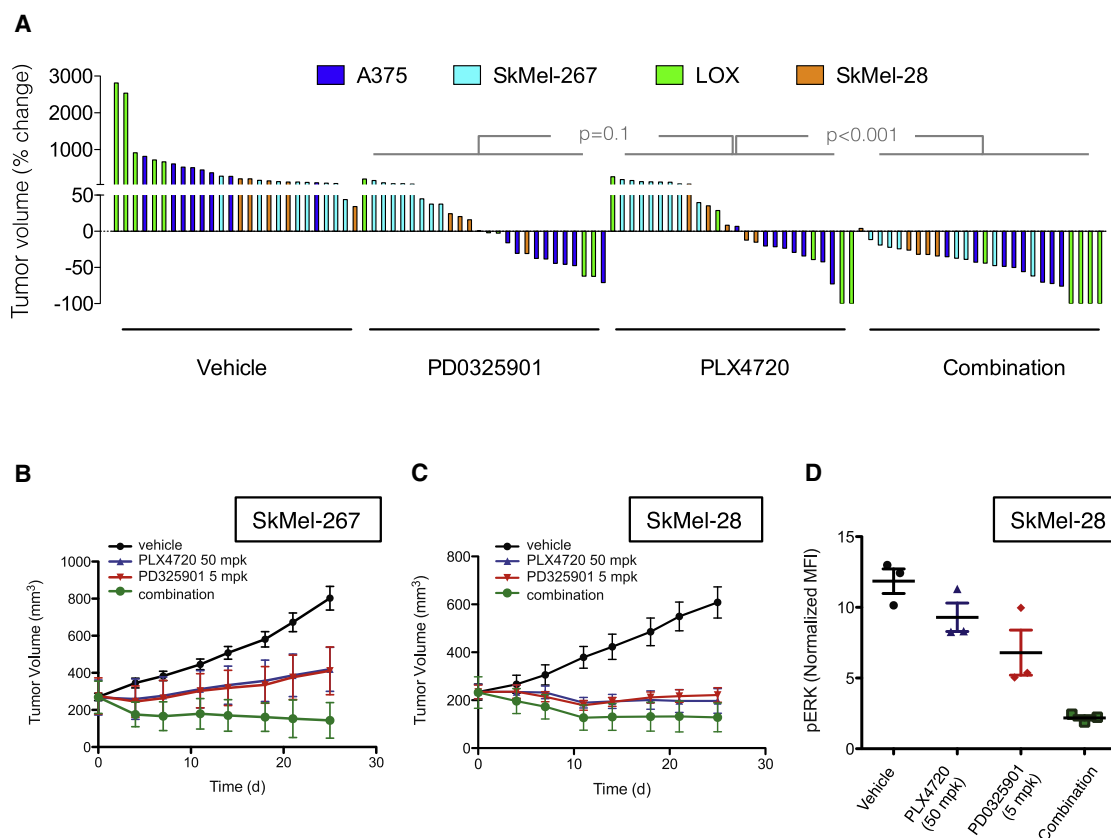
(A) BRAF<sup>V600E</sup>-expressing A375 and SkMel-28 cells were transfected with siRNA pools targeting all three Ras isoforms (+) or scrambled oligonucleotides (–). Forty-eight hours after transfection, the cells were treated with vemurafenib (2  $\mu$ M) for 24 hr and analyzed by immunoblotting (IB) to detect the indicated proteins. (B) A375 cells were transfected with siRNA pools targeting SOS1. Forty-eight hours after transfection, the cells were treated with vemurafenib (2  $\mu$ M) for 24 hr and analyzed by IB as above.

(C) A375 cells were untreated or initially pretreated with MEK inhibitor PD0325901 (50 nM) for the times shown. Subsequently, vemurafenib (1  $\mu$ M) was added for 1 hr. WCLs were assayed to determine changes in pMEK and pERK. WCLs were also analyzed with a GST-RBD Elisa assay. The fold change in the amount of GTP-bound Ras, as compared to untreated cells, is shown.

(D) BRAF<sup>V600E</sup> expressing Malme-3M cells were treated with PD0325901 (50 nM) for various times. To assess BRAF-CRAF dimerization, WCLs were subjected to immunoprecipitation (IP) with a BRAF-specific antibody and then IB for CRAF.

(E) A375 cells were transfected with siRNA pools targeting *spry1-4* genes. After 48 hr, they were treated with vemurafenib (1  $\mu$ M) for 1 hr. WCLs were analyzed to determine changes in inhibition of MEK phosphorylation.

(F) A375 cells were transfected with *CRAF* siRNAs and subsequently treated with vemurafenib for 24 hr. Changes in phospho and total ERK are shown.



**Figure 3. Combination of RAF and MEK Inhibitors Results in Improved Tumor Growth Inhibition In Vivo**

(A) Mice bearing xenografts from four different BRAF<sup>V600E</sup> melanoma cell lines were treated with vehicle, PD0325901 (2 mg/kg), PLX4720 (12.5 mg/kg), or their combination for 4 weeks. A waterfall representation of the best response for each tumor is shown.

(B and C) Mice bearing SkMel-267 (B) and SkMel-28 (C) xenografts were treated with PLX4720 (50 mg/kg) alone or in combination with PD0325901 (5 mg/kg) for the indicated times. The tumor volumes (and SEM) are shown as a function of time after treatment.

(D) Cells derived from SkMel-28 xenografts treated as shown for 48 hr were subjected to flow-cytometric analysis to measure levels of pERK in isolated human melanoma cells.

See also Figure S3.

inhibition of RAF and MEK has enhanced tumor activity and that this is due to more complete inhibition of ERK signaling.

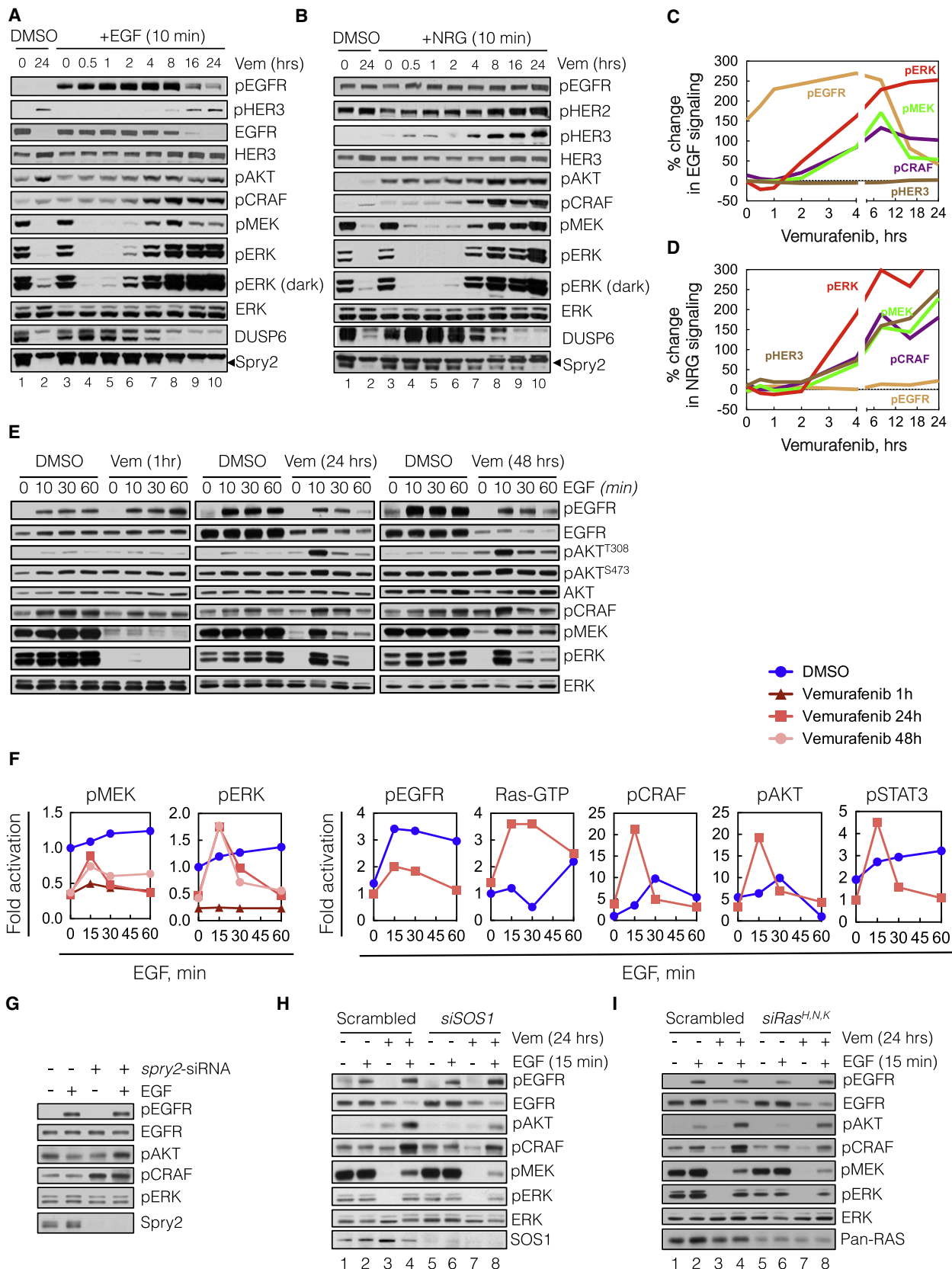
### Relief of ERK-Dependent Feedback Potentiates Receptor Signaling

We hypothesized that elevated ERK-dependent feedback in these cells suppresses mitogenic signaling and causes these cells to be poorly responsive to growth factors. If this is the case, relief of ERK-dependent feedback by inhibitors of ERK signaling should result in increased transduction of the ligand-activated signal. In order to test this hypothesis, we assessed the ability of exogenous ligands to activate signaling in BRAF<sup>V600E</sup> cells before and after inhibition of ERK signaling with vemurafenib (Figures 4A–4D).

BRAF<sup>V600E</sup> melanoma cells have high levels of pMEK and pERK and high levels of expression of DUSP6 and Spry2 (Figure 4A, lane 1). After 24 hr of exposure to vemurafenib (lane 2), pMEK and pERK are quite low, with residual levels of pERK due to rebound. DUSP6 and Spry2 levels are markedly diminished 4–8 hr after drug exposure (lanes 7–10). To assess the ability of an exogenous ligand to activate signaling, we added EGF or Neuregulin (NRG) at various times after vemurafenib treatment and evaluated signaling 10 min after ligand addition (Figures 4A and 4B, respectively, lanes 3–10). Vemurafenib completely suppressed pMEK and pERK within 30 min of treatment and neither ligand appreciably induced pMEK, pERK, pCRAF, or pAKT after 1 hr of RAF inhibition (lane 5). After 2 hr of RAF inhibition, however, EGF significantly stimulated pMEK

(G) BRAF<sup>V600E</sup>-expressing cell lines were initially treated with vemurafenib (1  $\mu$ M) for 2, 8, and 24 hr. After 24 hr of treatment, DMSO, vemurafenib (1  $\mu$ M, RAFi), or PD0325901 (5 nM, MEKi) was added for an additional 2, 8, and 24 hr, respectively. The total treatment time is indicated. The effect on ERK signaling is shown. (H) A375 cells were pretreated with inhibitors targeting the indicated kinases for 48 hr, followed by treatment with vemurafenib for 1 hr. WCLs were analyzed to detect the ability of vemurafenib to inhibit MEK phosphorylation by RAF, as well as the ability of the indicated compounds to inhibit their targets. Their effects on Spry2 and pCRAF are also shown.

See also Figure S2.



and pERK (lane 6). Ligand stimulation of signaling, which we term “signalability,” rose markedly after 4–8 hr of RAF inhibition (Figure 4A, lanes 7–8; Figure 4C), and was maintained after 24 hr of exposure to the inhibitor (lanes 9 and 10). A similar profile of ligand-induced signaling was observed when the cells were stimulated with NRG (Figure 4B, lanes 3–10; Figure 4D). The ability of ligands to induce pMEK and pERK was accompanied by an increase in their induction of CRAF and AKT phosphorylation.

These data show that ligand stimulation of ERK and PI3K signaling in BRAF<sup>V600E</sup> melanomas is low (i.e., suppressed signalability), but, hours after the ERK pathway is inhibited, the transduction of the signal is markedly potentiated (i.e., restored signalability). This could be due to enhanced activation of receptors, enhanced signaling downstream of the activated receptor, or both. Induction of EGFR phosphorylation after exposure to EGF for 10 min increased slightly 1 hr after RAF inhibition, at which time downstream signaling was not activated, and remained essentially constant from 2 to 8 hr after RAF inhibition (Figures 4A and 4C). EGFR expression did not change over this time. These findings suggest that enhancement of EGF signalability is due to relief of feedback inhibition of intracellular transduction of the ligand-induced signal. Of note, phospho- and total EGFR decreased significantly 16–24 hr after RAF inhibition, but induction of signaling by EGF was undiminished (Figure 4A, lanes 9 and 10).

The ability of NRG to induce phosphorylation of HER3 was enhanced 4 hr after RAF inhibition, while a minimal increase was noted in the levels of HER3 protein expression (Figures 4B and 4D). These results suggest that loss of ERK-dependent feedback potentiates NRG activation of HER3, an event that includes heterodimerization and phosphorylation by other HER kinases.

To test the generality of the phenomenon of increased signalability following RAF inhibition, A375 and SkMel-28 cells were treated with vemurafenib for 24 hr and then stimulated for 10 min with EGF, NRG, epiregulin (ERG), hepatocyte growth factor (HGF), insulin-like growth factor (IGF1), or platelet-derived growth factor (PDGF) (Figure S4A). With the exception of IGF1 and PDGF, the ability of all of other ligands to activate ERK was enhanced by pretreatment with vemurafenib. The effect of RAF inhibition on receptor phosphorylation was complex (Figure S4B). Ligand-induced phosphorylation of EGFR and IGF1R were not appreciably changed after 24 hr of ERK inhibition, whereas phosphorylation of Met was enhanced in SkMel-28 but not in A375 cells. These data show that activation of BRAF<sup>V600E</sup> suppresses the transduction of signaling from

multiple receptors and demonstrate the complexity of the details of this suppression in different tumors.

We characterized in more detail the kinetics of EGF stimulation of signaling in vemurafenib-treated A375 cells (Figures 4E and 4F). ERK is maximally inhibited after 1 hr of vemurafenib treatment but EGF activation of EGFR did not activate downstream effectors at this time. After 24 and 48 hr of vemurafenib treatment, however, EGF activates MEK, ERK, AKT, and STAT3 phosphorylation. Induction of effector phosphorylation could be blocked by HER kinase inhibitors or in the case of AKT by inhibition of PI3K (data not shown).

Our data suggest that overexpression of Spry proteins plays a role in suppressing signalability. To test this hypothesis, we determined if knocking down Spry2 in A375 melanomas enabled EGFR signaling. Downregulation of Spry2 induced pCRAF and increased EGF induction of pAKT (Figure 4G). Spry knockdown, however, did not affect EGFR-induced pERK, consistent with the idea that loss of DUSP6 expression is permissive for this effect. Knockdown of either SOS1 or Ras isoforms decreased the EGF-induced activation of pCRAF, pMEK, and pERK after 24 hr of vemurafenib treatment in A375 cells, suggesting that reactivation of ERK signaling requires these proteins (Figures 4H and 4I, respectively, lane 8 versus 4). These data support our conclusion that Spry proteins contribute to suppression of signalability by ERK-dependent feedback.

### Diverse Exogenous Ligands Reduce the Effectiveness of RAF Inhibitors

Our data suggest that the response of BRAF<sup>V600E</sup> melanoma cells to growth factors is limited. In contrast, after RAF inhibitor treatment, the restoration of signalability enables signal transduction from extracellular ligands, a process that is likely to diminish RAF inhibition. To determine which growth factors were capable of attenuating the antiproliferative effects of vemurafenib, we expressed a library of 317 cDNA constructs, encoding 220 unique secreted or single-pass transmembrane proteins in 293T cells (Figure 5A). The media derived from these cultures were added to BRAF<sup>V600E</sup> melanomas in combination with vemurafenib and the effect on proliferation was assessed. We identified more than five different ligand families (including EGF, HGF, NRG, and FGF) that antagonized the vemurafenib sensitivity in one or more of eight BRAF<sup>V600E</sup> melanomas tested (Figures 5B and S5A). In contrast, other growth factors, such as PDGF and IGF, had a minimal effect, and some, such as transforming growth factor- $\beta$ , accentuated vemurafenib-induced growth inhibition. A detailed presentation of the assay for the

### Figure 4. Relief of ERK-Dependent Feedback Potentiates Receptor Signaling

(A–D) BRAF<sup>V600E</sup>-expressing A375 cells were treated with vemurafenib (vem, 2  $\mu$ M) for various times. At the indicated times, the cells were stimulated with either EGF (100 ng/ml, A) or NRG (100 ng/ml, B) for 10 min. WCLs were analyzed by immunoblotting (IB) to assay downstream signaling. The percentage change in ligand induced signaling (C and D) was determined by densitometric analysis of the bands in (A) and (B), respectively.

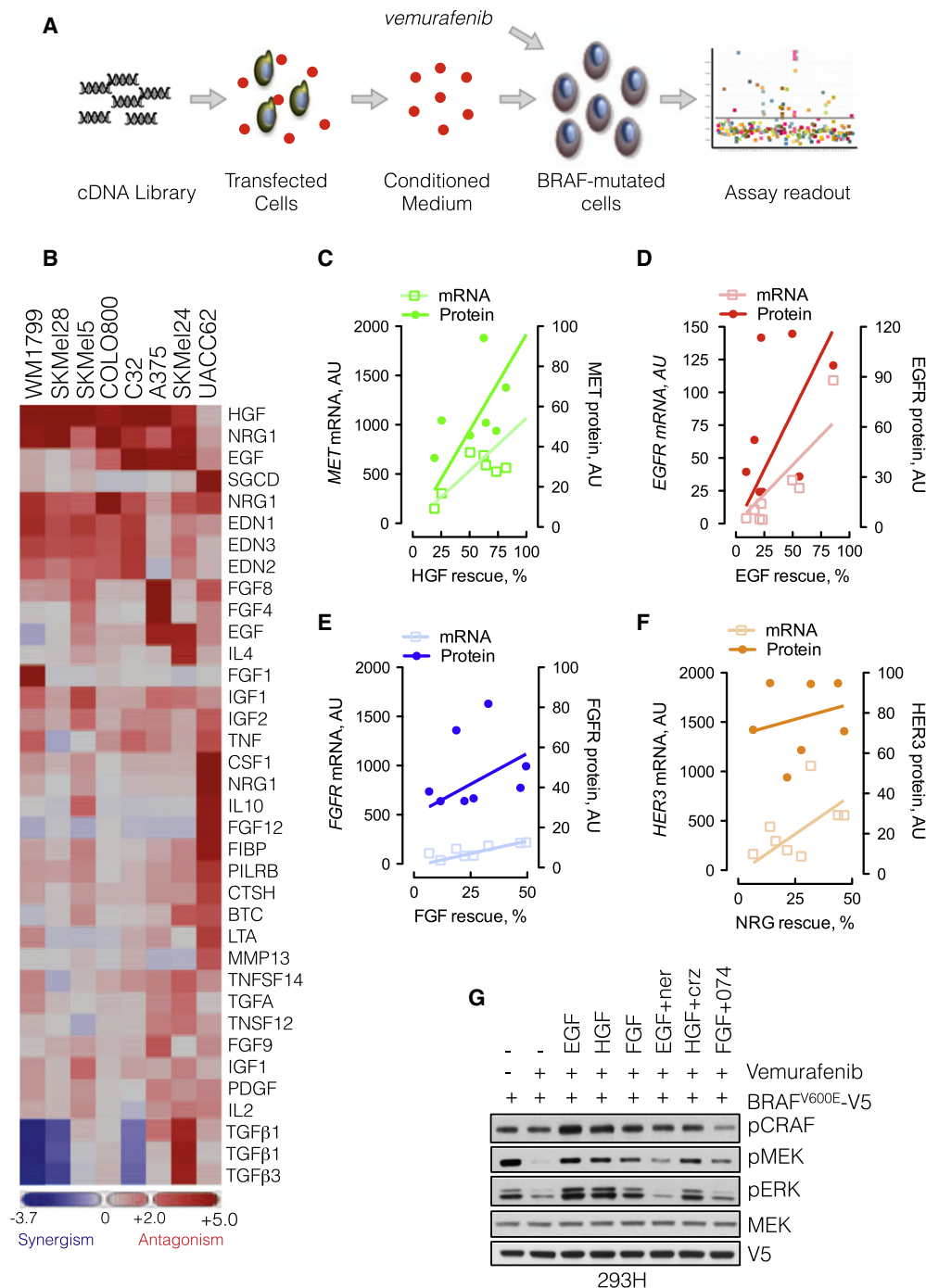
(E and F) A375 cells were untreated (DMSO) or treated with vemurafenib for 1, 24, or 48 hr in serum-free media and then stimulated with EGF for the indicated times. EGF-induced changes in phosphorylation of signaling intermediates were determined by IB (E) and quantified by densitometry (F). Changes in Ras-GTP were measured with an ELISA based GST-RBD assay (shown) and confirmed with a traditional pull-down assay (data not shown).

(G) A375 cells were transfected with *spry2* siRNAs, followed by serum starvation for 24 hr and EGF stimulation for 10 min. WCLs were IB with the indicated antibodies.

(H and I) A375 cells were transfected with siRNAs targeting either SOS1 (H) or the three Ras isoforms (I) or scrambled siRNAs. Then, the cells were treated with vemurafenib for 24 hr in serum-free media, followed by stimulation with EGF for 10 min. The phosphorylation of various signaling intermediates is shown.

See also Figure S4.





**Figure 5. Secreted Exogenous Ligands Reduce the Effectiveness of RAF Inhibitors**

(A) Schematic representation of the secretome assay. 293T cells grown in 384-well plates were transfected with a cDNA library encoding 220 unique secreted and single-pass transmembrane proteins. Secreted ligands were collected in the conditioned medium, which was combined with vemurafenib (1  $\mu$ M) and added to melanoma cell lines to assay the effect on proliferation.

(B) Heatmap representation of the effect of secreted ligands in the ability of vemurafenib to inhibit growth in a panel of eight BRAF<sup>V600E</sup> melanomas (some ligands were encoded by multiple cDNAs). Ligands with most potent effects are shown.

(C–F) The percentage rescue by the indicated growth factors was plotted as a function of the mRNA and protein level of the respective RTK. The mRNA level was obtained from expression profiling of the indicated lines, whereas the protein level was quantified by immunoblotting (shown in Figure S5C) and densitometry.

(G) 293H cells were transfected with V5-tagged BRAF<sup>V600E</sup>, followed by treatment with vemurafenib (1  $\mu$ M, 15 min), alone, and in combination with the indicated ligands and inhibitors (1  $\mu$ M each) of HER kinases (neratinib), MET (crizotinib), or FGFR (PD173074). The ability of vemurafenib to inhibit MEK phosphorylation is shown.

See also Figure S5.

effects of ligands on the proliferation of SkMel-28 cells exposed to vemurafenib is shown in [Figure S5B](#).

The ability of several ligands to reduce sensitivity to vemurafenib was further validated in A375, SkMel-19, and SkMel-267, in which growth factors increased the vemurafenib  $IC_{50}$  (from less than 2-fold to greater than 5-fold, [Figure S5C](#)). In contrast, in SkMel-28 cells, the  $IC_{50}$  increased to greater than 5  $\mu$ M in the presence of EGF, NRG, or HGF.

We attempted to identify factors that determined whether specific ligands (EGF, NRG, FGF, HGF) affected the vemurafenib-response in these cell lines. The attenuation of vemurafenib effect by these growth factors correlated with the level of mRNA and protein expression of their cognate receptors ([Figures S5C–S5F](#) and [S5D](#)).

The data in [Figure 4](#) suggest that RTK ligands will decrease RAF inhibition by vemurafenib. To test whether this is the case in a single cellular background, we treated 293H cells expressing BRAF<sup>V600E</sup> with vemurafenib, in the presence or absence of EGF, HGF, and FGF. These growth factors reduced the ability of vemurafenib to inhibit pMEK ([Figure 5G](#)), an effect that was reversed by inhibition of the respective RTKs, although the effect of MET inhibitor crizotinib was modest.

#### HER Kinase Activity Is Upstream of ERK Rebound

In vivo, BRAF<sup>V600E</sup> melanomas may be exposed to autocrine, paracrine, and endocrine RTK ligands. Our model suggests that reactivation of signalability when ERK feedback is inhibited will enable signaling from mitogenic growth factors. Since ERK rebound occurred in A375 cells exposed to vemurafenib under serum-free conditions (data not shown), we hypothesized that secreted ligands were involved. To test this possibility, we collected conditioned medium from serum-deprived A375 cells and found that it induced ERK signaling in 293H cells, as did EGF stimulation ([Figure 6A](#), lanes 2 and 3). This induction was blocked by the HER kinase inhibitor neratinib (lane 4), suggesting that A375 cells secrete a HER kinase ligand. Furthermore, whereas vemurafenib effectively inhibited pERK in BRAF<sup>V600E</sup>-transfected 293H cells (lanes 5 and 6), its ability to inhibit was reduced by A375-conditioned medium (lane 7). Under these conditions, maximal inhibition by vemurafenib was restored when neratinib was also added (lane 8).

To determine whether activated HER kinases support pERK rebound in BRAF<sup>V600E</sup> cells, cells were treated for 48 hr with vemurafenib, alone or in combination with neratinib. We found that cotreatment with neratinib decreased ERK reactivation in vemurafenib-treated cells but had no detectable effect on pERK in the absence of vemurafenib ([Figure 6B](#)). Of note, neratinib inhibited pEGFR without affecting pERK in the absence of vemurafenib treatment. This confirms that while upstream receptor activation may be required for ERK rebound, it is not sufficient. Relief of ERK-dependent upstream feedback is the primary cause of ERK reactivation. The receptor may be activated, but the signal is transduced effectively only when vemurafenib blocks ERK feedback.

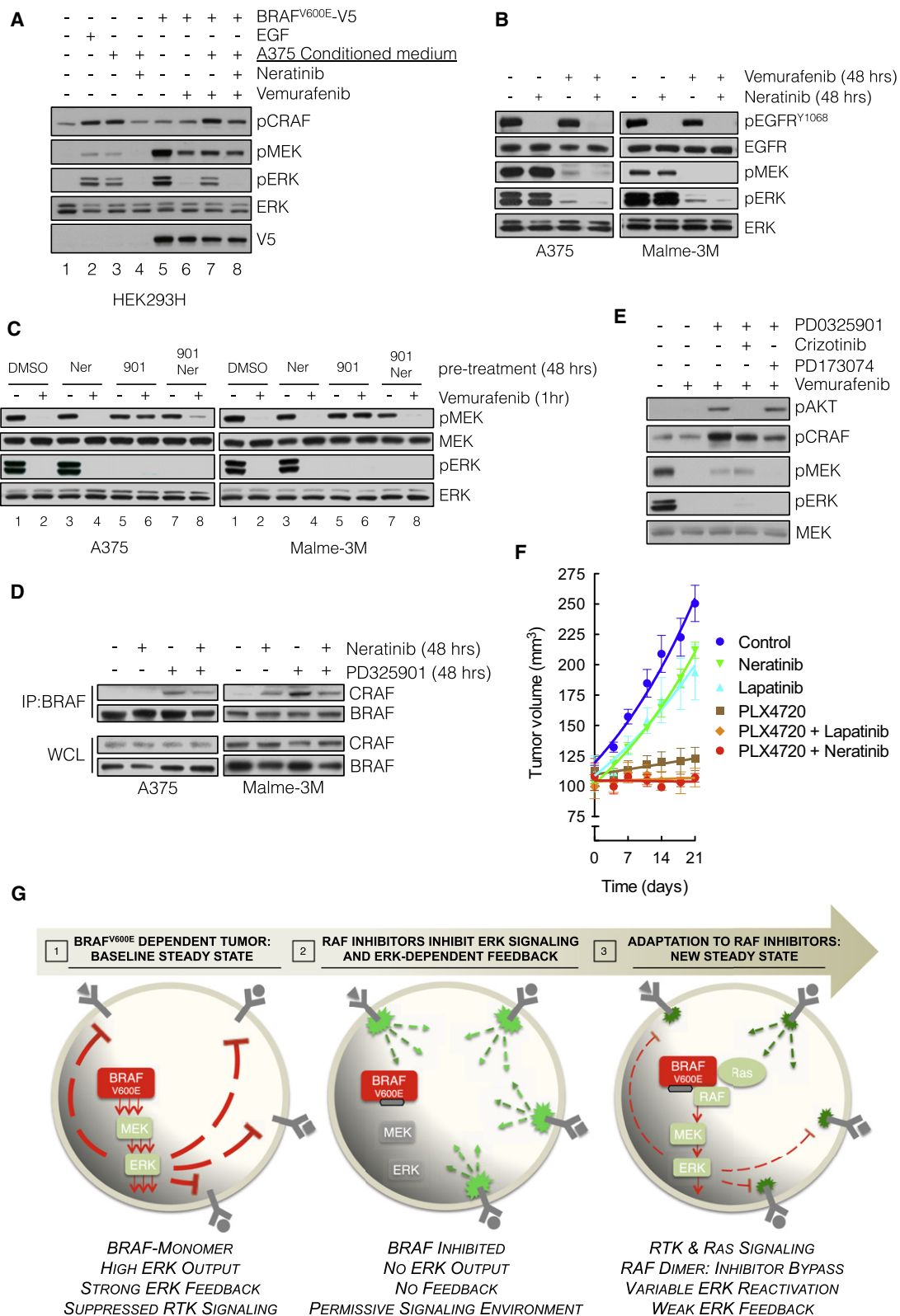
In [Figure 2](#), we show that MEK inhibition relieved feedback inhibition of Ras, induced RAF dimerization, and decreased the ability of vemurafenib to inhibit MEK phosphorylation. We asked if inhibition of HER kinase signaling in this setting restored the activity of vemurafenib. A375 and Malme-3M cells were pre-

treated with a MEK inhibitor (PD0325901) and/or a HER kinase inhibitor (neratinib) for 48 hr, followed by treatment with vemurafenib for 1 hr. Pretreatment with the MEK inhibitor alone attenuated the inhibition of MEK phosphorylation by vemurafenib ([Figure 6C](#), lane 2 versus 6). Neratinib had no effect on ERK signaling when given alone, but restored the ability of vemurafenib to inhibit its target in cells pretreated with the MEK inhibitor (lane 6 versus 8). This restoration was associated with a decrease in the amount of BRAF-CRAF dimers induced by MEK inhibitor treatment, although dimerization was not completely abolished ([Figure 6D](#)). This suggests that while signals originating from HER kinases attenuate the effect of RAF inhibitors, other RTK-dependent pathways likely contribute as well. Indeed, the attenuation of vemurafenib's effect caused by pretreatment with a MEK inhibitor was also reversed by inhibition of FGFR. The MET inhibitor crizotinib did not affect the ability of vemurafenib to inhibit RAF in this system, but it did inhibit feedback-mediated activation of AKT ([Figure 6E](#)). Finally, the inhibition of RAF by vemurafenib in combination with HER kinase inhibitors neratinib or lapatinib caused more growth inhibition in vivo than RAF inhibition alone ([Figure 6F](#)). These findings together with those in [Figure 3](#) suggest that maximizing inhibition of ERK output by combining RAF inhibitors with inhibitors of ERK rebound may be required for full therapeutic benefit.

#### DISCUSSION

Activation of BRAF by mutation occurs in approximately 8% of human cancers including the majority of melanomas ([Davies et al., 2002](#); [Badalian-Very et al., 2010](#); [Brose et al., 2002](#); [Nikiforova et al., 2003](#); [Schiffman et al., 2010](#); [Tiacchi et al., 2011](#)). Recently, ATP-competitive inhibitors of RAF kinase have been shown to be extremely effective in the treatment of melanomas with mutant BRAF ([Chapman et al., 2011](#)). This is thought to occur because these drugs inhibit ERK signaling only in tumors with mutant BRAF, whereas they induce ERK in other tumors and normal cells ([Hatzivassiliou et al., 2010](#); [Heidorn et al., 2010](#); [Joseph et al., 2010](#); [Poulikakos et al., 2010](#)).

Induction occurs because RAF inhibitors cause transactivation of Ras-dependent RAF dimers ([Poulikakos et al., 2010](#)). However, BRAF<sup>V600E</sup> signals as a functional monomer and RAF inhibitors inhibit ERK signaling in this setting. We now show that Ras activity is extremely low in BRAF<sup>V600E</sup> melanomas. This finding confirms that BRAF<sup>V600E</sup> functions in a Ras-independent fashion in these cells. The questions arising now are why Ras activity is low, and whether there a causal relationship that explains why a RAF mutant that signals as a monomer is prevalent in tumor cells with low Ras activity? It is possible that physiologic levels of Ras-GTP are low in the normal precursor cells from which melanomas develop. RAF mutants that require Ras dependent dimerization would have low activity in these cells and there would be a strong selection for a RAF mutant capable of signaling as a monomer. Alternatively, ERK activation induces feedback inhibition of upstream signaling, which may be sufficient to potently suppress Ras activation. Here, we have demonstrated the latter to be the case. Inhibition of ERK signaling with either RAF or MEK inhibitors significantly induced Ras activation in these tumors.



**Figure 6. Targeting HER Receptor Signaling Restores Sensitivity to RAF Inhibition**

(A) BRAF<sup>V600E</sup>-expressing A375 cells were grown in serum-free medium for 24 hr and the medium was collected. This conditioned medium (CM) was added to 293H cells (lanes 1–4) or to 293H cells expressing exogenous V5 tagged BRAF<sup>V600E</sup> (lanes 5–8). The cells were also treated with the indicated combinations of CM, vemurafenib, and neratinib in order to assay the effect on ERK signaling.

This induction is likely multifactorial with contributions from the various components of ERK feedback, such as direct phosphorylation of SOS and EGFR, as well as overexpression of Spry. Here, we show that knockdown of Spry in BRAF<sup>V600E</sup> cells increased Ras and RAF activation, and decreased the sensitivity of the pathway to RAF inhibitors. Spry proteins, however, do not affect the direct inhibition of SOS and CRAF by ERK, and therefore, even though Spry knockdown enables signaling from RTKs to SOS, loss of Spry alone cannot account for the full effect of ERK-dependent feedback.

Because physiologic activation of ERK is self-limited in extent and duration (Courtois-Cox et al., 2006), one may ask how oncoproteins cause sufficient activation of ERK output at all? We believe that activation of ERK output requires selection of oncoproteins that have decreased sensitivity to feedback, or second mutations that inactivate the feedback apparatus. In fact, we have previously shown that whereas ERK transcriptional output is quite elevated in tumors with mutant BRAF or mutant Ras, it is only marginally elevated in tumor cells with mutant EGFR or amplified HER2 (Pratilas et al., 2009). In these tumors, ERK pathway feedback is intact and levels of Ras activation are low. In contrast, the mutant Ras protein is constitutively activated (McCormick, 1993) and it is thus refractory to feedback inhibition of upstream signaling.

We propose that there is a powerful selection for the BRAF<sup>V600E</sup> mutation because it signals as a Ras-independent monomer that is insensitive to feedback. This results in marked elevation of ERK output, with consequent feedback inhibition of Ras-GTP. In agreement with this idea, inhibition of ERK signaling relieves this feedback, and causes induction of Ras activation. Ras activation is associated with a rebound in ERK phosphorylation and output. This rebound is Ras and SOS dependent, and more importantly, is CRAF dependent. Therefore, while the rebound may be potentiated by the loss of ERK phosphatases following RAF inhibition, these findings are consistent with the idea that rebound requires reactivation of upstream signaling and induction of RAF dimers that are refractory to RAF inhibitors but sensitive to MEK inhibition.

If RAF inhibitors cause the Ras-dependent formation of active RAF dimers that are refractory to RAF inhibition, why do these drugs work at all? The induction of Ras-GTP is variable in different melanoma cell lines. It tends to be modest, however, reaching levels that are still significantly below those found in RTK-driven tumor cells. This results in a concomitant modest increase in ERK phosphorylation and in ERK output. In most melanomas, this reactivation is not sufficient to cause resistance. We believe, however, that it can attenuate the effects of

therapy, as we find that combining RAF inhibitor with a low-dose MEK inhibitor causes greater inhibition of pERK and ERK output than either drug alone, and enhanced antitumor activity in vivo in melanoma xenograft models. Thus, the variability observed in the degree of BRAF<sup>V600E</sup> melanoma response in patients treated with RAF inhibitors may be due in part to variable relief of feedback. This suggests that combined inhibition could increase the degree or duration of response obtained with RAF inhibition alone.

Others have noted that ERK rebound is greater in BRAF<sup>V600E</sup> thyroid (J.A.F., unpublished data) and colon (Corcoran et al., 2012) carcinomas and is associated with resistance to the RAF inhibitor. Recent studies show that rebound in colorectal tumors may be associated with feedback reactivation of EGFR function (Corcoran et al., 2012; Prahallad et al., 2012). This may explain why RAF inhibitors have been much less effective in the treatment of BRAF<sup>V600E</sup> colorectal cancer than they are in melanoma.

Prahallad et al. (2012) report that RAF inhibitors induce EGFR activation by inhibiting the ERK-dependent CDC25C phosphatase and thus activating EGFR signaling in colorectal cancer cells. Our data suggest that ERK-dependent feedback is complex and that relief of feedback and rebound in ERK activity is due to multiple mechanisms. In melanomas, we did not observe an association between ERK rebound and sustained induction of EGFR phosphorylation. Corcoran et al. (2012) also demonstrated that ERK phosphorylation rapidly rebounds after initial inhibition by RAF inhibitors in colorectal cancer. They also find that this rebound is EGFR dependent and associated with Ras activation, but not with induction of EGFR phosphorylation. Here, we demonstrate that relief of ERK-dependent feedback by RAF inhibitors results in Ras activation, induction of CRAF-containing dimers, and RAF-inhibitor-resistant ERK rebound. In contrast to our findings, Corcoran et al. do not observe Ras reactivation or ERK rebound in melanomas. This is probably because the degree of rebound is greater in colorectal cancer than it is in melanoma, in which it is more difficult to appreciate. We believe that potent ERK-dependent feedback inhibition of signaling is a general phenomenon in tumors with BRAF<sup>V600E</sup> and that the antitumor effects of drugs that inhibit ERK signaling will be diminished by relief of this feedback.

It is clear that the degree of rebound varies among individual tumors within lineages and that the rebound is greater on average in some lineages (e.g., colorectal), than in others (e.g., melanoma). Although it is unlikely that this is a simple process dependent on reactivation of a single receptor, it appears that the process may be preferentially dependent on activation of a particular receptor in some lineages (e.g., EGFR in colorectal

(B) A375 and Melme3M cells were treated with vemurafenib (1  $\mu$ M) alone or in combination with neratinib (1  $\mu$ M) for 48 hr, and the effect on EGFR and downstream signaling was analyzed.

(C) The cells were pretreated with MEK inhibitor PD0325901 (901, 50 nM), and HER-kinase inhibitor neratinib (Ner, 1  $\mu$ M), alone or in combination for 48 hr, followed by vemurafenib (1  $\mu$ M) for 1 hr. Phospho- and total MEK and ERK are determined by IB.

(D) The indicated cell lines were treated with PD0325901 and/or neratinib. WCLs were subjected to IP with a BRAF-specific antibody and IB for CRAF. The level of BRAF and CRAF in the WCLs is shown.

(E) A375 cells were treated as in (C) but PD0325901 was combined with crizotinib and PD173074 (1  $\mu$ M each), targeting MET and FGFR, respectively.

(F) SkMel-28-derived xenografts were treated with combinations of PLX4720 (50 mg/kg), neratinib (20 mg/kg), and lapatinib (150 mg/kg). Tumor growth (and SEM) as a function of time is shown.

(G) Graphical representation of BRAF<sup>V600E</sup> melanomas adapting to RAF inhibitors. High levels of ERK-dependent feedback suppress RTK signaling and maintain mutant BRAF in a monomeric, drug-sensitive state. Inhibition of ERK signaling inactivates feedback and restores RTK signaling to Ras. The resulting RAF dimers are resistant to RAF inhibitors, leading to bypass of inhibition and reactivation of ERK signaling.



carcinoma; [Corcoran et al., 2012](#); [Prahallad et al., 2012](#)). Our findings show that signaling from many receptors is suppressed by ERK-dependent feedback in melanomas and reactivated when feedback is relieved by ERK inhibition. It must be kept in mind that as receptor activation of ERK increases, feedback increases and receptor signaling declines. Each tumor reaches a new steady state of ERK activity after RAF inhibition that must be dependent on the level of ERK output required to induce feedback. If feedback mechanisms are sensitive to induction by low levels of ERK output, rebound will be modest. If high levels of ERK output are required to reinitiate feedback, marked ERK rebound will occur and the tumor will be resistant. Future progress will depend on determining the lineage-dependent and tumor-specific factors responsible for the new steady state.

Our data show that BRAF<sup>V600E</sup> melanomas are characterized by high levels of ERK-dependent feedback that operates globally to regulate oncogenic signaling. These cells have markedly decreased sensitivity to extracellular ligands. Indeed, the transduction of signals from activated RTKs, a cellular property that we have termed signalability, is markedly suppressed in BRAF<sup>V600E</sup> melanomas. After ERK inhibition, however, the ERK-dependent negative feedback is lost, and the ability of ligands to activate signaling is markedly enhanced. This is our key finding: at baseline these tumors are relatively insensitive to the effects of secreted growth factors, because the ability of such ligands to induce signaling is disabled. After administration of drugs that effectively inhibit ERK signaling, feedback is reduced and growth factors can signal. Thus, they may attenuate or prevent the antitumor effects of the inhibitor. The signaling network is radically changed and reactivated as an adaptation to inhibition of ERK signaling ([Figure 6G](#)).

Recently, several reports have shown that ligands, particularly HGF, can cause resistance to RAF inhibitors ([Straussman et al., 2012](#); [Wilson et al., 2012](#)). Induction of signalability when ERK-dependent feedback is relieved requires the presence of active RTKs. We show here that multiple ligands contribute to ERK rebound in melanomas exposed to RAF inhibitors. However, receptor activation is permissive for induction of signalability, i.e., necessary, but not sufficient. Rebound in ERK signaling is due to relief of feedback inhibition of signal transduction when ERK activation is inhibited.

In order to understand how the tumor adapts to pathway inhibition and design more effective therapies, it will be necessary to identify the pathways that become reactivated in patients, as it is not clear that preclinical models are useful in this regard. This will require comparison of pretreatment biopsies with biopsies obtained hours after treatment and the development of new technologies to determine which ligands are present and which pathways have become reactivated. This will allow the development of rational combination therapies aimed at inhibiting the adaptation of the tumor to the targeted therapy.

## EXPERIMENTAL PROCEDURES

### Cell Lines, Antibodies, and Reagents

Cell lines were maintained as previously described ([Solit et al., 2006](#)). Antibodies against phospho and total ERK, MEK, AKT, CRAF, HER1-3, IGF1R, and PDGFR $\beta$  were obtained from Cell Signaling; DUSP6, Spry and Ras from Santa Cruz Biotechnology. PD0325901 was synthesized at MSKCC organic synthesis core facility by O. Ouerfelli. Vemurafenib and PLX4720 were

provided by Plexxikon. Trametinib and dabrafenib were obtained from GlaxoSmithKline. Neratinib was obtained from Selleckchem. Drugs for in vitro studies were dissolved in dimethyl sulfoxide (DMSO) to yield 10 or 1 mM stock solutions and stored at  $-20^{\circ}\text{C}$ .

### Transfections, Immunoblotting, and Ras-GTP Assays

siRNA pools were obtained from Dharmacon and transfected into cells by using Lipofectamine RNAiMAX, according to manufacturer's instructions. Cell lysis and immunoblotting were performed as described ([Basso et al., 2002](#)). GTP-bound Ras was measured using the CRAF Ras-binding domain (RBD) pull-down and Detection Kit (Thermo Scientific) or an ELISA-based RBD pull-down assay (Millipore), as instructed by the manufacturers.

### RT-PCR Analysis

RNA was extracted using the RNeasy Mini Kit (QIAGEN), reverse transcribed, and used for quantitative RT-PCR, as previously described ([Pratils et al., 2009](#)). Relative expression of target genes was calculated using the delta-delta Ct method and normalized to the mRNA content of three housekeeping genes.

### Animal Studies

Nu/nu athymic mice were obtained from the Harlan Laboratories and maintained in compliance with IACUC guidelines. Subcutaneous xenografts and tumor measurements were performed as described ([Solit et al., 2006](#)). All studies were performed in compliance with institutional guidelines under an IACUC approved protocol (Memorial Sloan-Kettering Cancer Center No. 09-05-009).

### Tumor Phospho-Flow Analysis

Tumors excised after 48 hr of drug exposure were homogenized and stained with the Live/Dead Fixable Aqua Dead Cell Stain (Invitrogen) according to manufacturer's instructions, followed by fixation and permeabilization and then analysis by flow cytometry with antibodies detecting HLA-ABC (eBioscience), pERK1/2 (Cell Signaling), and APC (Southern Biotech).

### Secretome Screen

A collection of 317 cDNA constructs, representing 220 unique secreted and single-pass transmembrane proteins, were reverse transfected individually into 293T cells using Fugene HD (Promega) in a 384-well plate format ([Harbinski et al., 2012](#)). After 4 days of incubation, to allow accumulation of secreted proteins, conditioned media from each well was transferred to the assay cells, to which vemurafenib (1  $\mu\text{M}$ ) was also added. Proliferation was measured 96 hr later by using CellTiter-Glo. For each individual experiment (performed in triplicate for each cell line) the relative light units (RLUs) were plotted as a function of the various ligand-expressing constructs. Cell growth in the absence of vemurafenib or conditioned media (i.e., DMSO only), and in the presence of vemurafenib alone, were used as controls. The effect (e.g., rescue) of each ligand in the ability of vemurafenib to inhibit growth was calculated by the formula: (median RLU for the construct – median RLU vemurafenib alone)/median RLU DMSO. The rescue values were then used to create a heatmap with the TIBCO Spotfire software. The relative mRNA levels were obtained from expression analysis of the indicated cell lines ([Barretina et al., 2012](#)). The relative protein level was determined by immunoblotting ([Figure S5D](#)) and densitometric analysis.

## SUPPLEMENTAL INFORMATION

Supplemental Information includes five figures and can be found with this article online at <http://dx.doi.org/10.1016/j.ccr.2012.10.009>.

## ACKNOWLEDGMENTS

This work has been funded by the National Institutes of Health (P01-CA129243 to N.R. and K08-CA127350 to C.A.P.), Melanoma Research Alliance (to N.R. and C.A.P.), STARR Cancer Consortium (to N.R.), the Experimental Therapeutics Center of MSKCC (to N.R.), Harry J. Lloyd Charitable Trust (to P.I.P.), the Charles A. Dana Foundation (to P.L.), and Mr. William H. Goodwin and Mrs. Alice Goodwin and the Commonwealth Foundation for Cancer Research (to N.R.). The authors are grateful to Gideon Bollag for providing vemurafenib



and PLX4720, Bart Lutterbach and Giordano Caponigro for insightful discussions, and Christopher Wilson and Fred Harbinsi for their assistance with secretome screen.

Received: May 5, 2012

Revised: August 31, 2012

Accepted: October 19, 2012

Published: November 12, 2012

## REFERENCES

- Avraham, R., and Yarden, Y. (2011). Feedback regulation of EGFR signalling: decision making by early and delayed loops. *Nat. Rev. Mol. Cell Biol.* 12, 104–117.
- Badalian-Very, G., Vergilio, J.A., Degar, B.A., MacConaill, L.E., Brandner, B., Calicchio, M.L., Kuo, F.C., Ligon, A.H., Stevenson, K.E., Kehoe, S.M., et al. (2010). Recurrent BRAF mutations in Langerhans cell histiocytosis. *Blood* 116, 1919–1923.
- Barretina, J., Caponigro, G., Stransky, N., Venkatesan, K., Margolin, A.A., Kim, S., Wilson, C.J., Lehár, J., Kryukov, G.V., Sonkin, D., et al. (2012). The Cancer Cell Line Encyclopedia enables predictive modelling of anticancer drug sensitivity. *Nature* 483, 603–607.
- Basso, A.D., Solit, D.B., Chiosis, G., Giri, B., Tschlis, P., and Rosen, N. (2002). Akt forms an intracellular complex with heat shock protein 90 (Hsp90) and Cdc37 and is destabilized by inhibitors of Hsp90 function. *J. Biol. Chem.* 277, 39858–39866.
- Bollag, G., Hirth, P., Tsai, J., Zhang, J., Ibrahim, P.N., Cho, H., Spevak, W., Zhang, C., Zhang, Y., Habets, G., et al. (2010). Clinical efficacy of a RAF inhibitor needs broad target blockade in BRAF-mutant melanoma. *Nature* 467, 596–599.
- Brose, M.S., Volpe, P., Feldman, M., Kumar, M., Rishi, I., Gerrero, R., Einhorn, E., Herlyn, M., Minna, J., Nicholson, A., et al. (2002). BRAF and RAS mutations in human lung cancer and melanoma. *Cancer Res.* 62, 6997–7000.
- Chapman, P.B., Hauschild, A., Robert, C., Haanen, J.B., Ascierto, P., Larkin, J., Dummer, R., Garbe, C., Testori, A., Maio, M., et al.; BRIM-3 Study Group. (2011). Improved survival with vemurafenib in melanoma with BRAF V600E mutation. *N. Engl. J. Med.* 364, 2507–2516.
- Corcoran, R.B., Ebi, H., Turke, A.B., Coffee, E.M., Nishino, M., Cogdill, A.P., Brown, R.D., Della Pelle, P., Dias-Santagata, D., Hung, K.E., et al. (2012). EGFR-mediated re-activation of MAPK signaling contributes to insensitivity of BRAF mutant colorectal cancers to RAF inhibition with vemurafenib. *Cancer Discov.* 2, 227–235.
- Courtis-Cox, S., Genter Williams, S.M., Reczek, E.E., Johnson, B.W., McGillicuddy, L.T., Johannessen, C.M., Hollstein, P.E., MacCollin, M., and Cichowski, K. (2006). A negative feedback signaling network underlies oncogene-induced senescence. *Cancer Cell* 10, 459–472.
- Davies, H., Bignell, G.R., Cox, C., Stephens, P., Edkins, S., Clegg, S., Teague, J., Woffendin, H., Garnett, M.J., Bottomley, W., et al. (2002). Mutations of the BRAF gene in human cancer. *Nature* 417, 949–954.
- Dougherty, M.K., Müller, J., Ritt, D.A., Zhou, M., Zhou, X.Z., Copeland, T.D., Conrads, T.P., Veenstra, T.D., Lu, K.P., and Morrison, D.K. (2005). Regulation of Raf-1 by direct feedback phosphorylation. *Mol. Cell* 17, 215–224.
- Douville, E., and Downward, J. (1997). EGF induced SOS phosphorylation in PC12 cells involves P90 RSK-2. *Oncogene* 15, 373–383.
- Downward, J. (2003). Targeting RAS signalling pathways in cancer therapy. *Nat. Rev. Cancer* 3, 11–22.
- Eblaghie, M.C., Lunn, J.S., Dickinson, R.J., Münsterberg, A.E., Sanz-Ezquerro, J.J., Farrell, E.R., Mathers, J., Keyse, S.M., Storey, K., and Tickle, C. (2003). Negative feedback regulation of FGF signaling levels by Pyst1/MKP3 in chick embryos. *Curr. Biol.* 13, 1009–1018.
- Hanafusa, H., Torii, S., Yasunaga, T., and Nishida, E. (2002). Sprouty1 and Sprouty2 provide a control mechanism for the Ras/MAPK signalling pathway. *Nat. Cell Biol.* 4, 850–858.
- Harbinsi, F., Craig, V.J., Sanghavi, S., Jeffery, D., Liu, L., Sheppard, K.A., Wagner, S., Stamm, C., Bunes, A., Chatenay-Rivauday, C., et al. (2012). Rescue screens with secreted proteins reveal compensatory potential of receptor tyrosine kinases in driving cancer growth. *Cancer Discov.* 2, 948–959.
- Hatzivassiliou, G., Song, K., Yen, I., Brandhuber, B.J., Anderson, D.J., Alvarado, R., Ludlam, M.J., Stokoe, D., Gloor, S.L., Vigers, G., et al. (2010). RAF inhibitors prime wild-type RAF to activate the MAPK pathway and enhance growth. *Nature* 464, 431–435.
- Heidorn, S.J., Milagre, C., Whittaker, S., Nourry, A., Niculescu-Duvas, I., Dhomen, N., Hussain, J., Reis-Filho, J.S., Springer, C.J., Pritchard, C., and Marais, R. (2010). Kinase-dead BRAF and oncogenic RAS cooperate to drive tumor progression through CRAF. *Cell* 140, 209–221.
- Hingorani, S.R., Jacobetz, M.A., Robertson, G.P., Herlyn, M., and Tuveson, D.A. (2003). Suppression of BRAF(V599E) in human melanoma abrogates transformation. *Cancer Res.* 63, 5198–5202.
- Joseph, E.W., Pratilas, C.A., Poulikakos, P.I., Tadi, M., Wang, W., Taylor, B.S., Halilovic, E., Persaud, Y., Xing, F., Viale, A., et al. (2010). The RAF inhibitor PLX4032 inhibits ERK signaling and tumor cell proliferation in a V600E BRAF-selective manner. *Proc. Natl. Acad. Sci. USA* 107, 14903–14908.
- Kim, H.J., and Bar-Sagi, D. (2004). Modulation of signalling by Sprouty: a developing story. *Nat. Rev. Mol. Cell Biol.* 5, 441–450.
- Kirkwood, J.M., Bastholt, L., Robert, C., Sosman, J., Larkin, J., Hersey, P., Middleton, M., Cantarini, M., Zazulina, V., Kemsley, K., and Dummer, R. (2012). Phase II, open-label, randomized trial of the MEK1/2 inhibitor selumetinib as monotherapy versus temozolomide in patients with advanced melanoma. *Clin. Cancer Res.* 18, 555–567.
- Leboeuf, R., Baumgartner, J.E., Benezra, M., Malaguarnera, R., Solit, D., Pratilas, C.A., Rosen, N., Knauf, J.A., and Fagin, J.A. (2008). BRAFV600E mutation is associated with preferential sensitivity to mitogen-activated protein kinase kinase inhibition in thyroid cancer cell lines. *J. Clin. Endocrinol. Metab.* 93, 2194–2201.
- Mason, J.M., Morrison, D.J., Basson, M.A., and Licht, J.D. (2006). Sprouty proteins: multifaceted negative-feedback regulators of receptor tyrosine kinase signaling. *Trends Cell Biol.* 16, 45–54.
- McCormick, F. (1993). Signal transduction. How receptors turn Ras on. *Nature* 363, 15–16.
- Nazarian, R., Shi, H., Wang, Q., Kong, X., Koya, R.C., Lee, H., Chen, Z., Lee, M.K., Attar, N., Sazegar, H., et al. (2010). Melanomas acquire resistance to B-RAF(V600E) inhibition by RTK or N-RAS upregulation. *Nature* 468, 973–977.
- Nikiforova, M.N., Kimura, E.T., Gandhi, M., Biddinger, P.W., Knauf, J.A., Basolo, F., Zhu, Z., Giannini, R., Salvatore, G., Fusco, A., et al. (2003). BRAF mutations in thyroid tumors are restricted to papillary carcinomas and anaplastic or poorly differentiated carcinomas arising from papillary carcinomas. *J. Clin. Endocrinol. Metab.* 88, 5399–5404.
- Nimnual, A., and Bar-Sagi, D. (2002). The two hats of SOS. *Sci. STKE* 2002, pe36.
- Poulikakos, P.I., Persaud, Y., Janakiraman, M., Kong, X., Ng, C., Moriceau, G., Shi, H., Atefi, M., Titz, B., Gabay, M.T., et al. (2011). RAF inhibitor resistance is mediated by dimerization of aberrantly spliced BRAF(V600E). *Nature* 480, 387–390.
- Poulikakos, P.I., Zhang, C., Bollag, G., Shokat, K.M., and Rosen, N. (2010). RAF inhibitors transactivate RAF dimers and ERK signalling in cells with wild-type BRAF. *Nature* 464, 427–430.
- Prahalad, A., Sun, C., Huang, S., Di Nicolantonio, F., Salazar, R., Zecchin, D., Beijersbergen, R.L., Bardelli, A., and Bernards, R. (2012). Unresponsiveness of colon cancer to BRAF(V600E) inhibition through feedback activation of EGFR. *Nature* 483, 100–103.
- Pratilas, C.A., Hanrahan, A.J., Halilovic, E., Persaud, Y., Soh, J., Chitale, D., Shigematsu, H., Yamamoto, H., Sawai, A., Janakiraman, M., et al. (2008). Genetic predictors of MEK dependence in non-small cell lung cancer. *Cancer Res.* 68, 9375–9383.
- Pratilas, C.A., Taylor, B.S., Ye, Q., Viale, A., Sander, C., Solit, D.B., and Rosen, N. (2009). (V600E)BRAF is associated with disabled feedback inhibition of

- RAF-MEK signaling and elevated transcriptional output of the pathway. *Proc. Natl. Acad. Sci. USA* **106**, 4519–4524.
- Schiffman, J.D., Hodgson, J.G., VandenBerg, S.R., Flaherty, P., Polley, M.Y., Yu, M., Fisher, P.G., Rowitch, D.H., Ford, J.M., Berger, M.S., et al. (2010). Oncogenic BRAF mutation with CDKN2A inactivation is characteristic of a subset of pediatric malignant astrocytomas. *Cancer Res.* **70**, 512–519.
- Sebolt-Leopold, J.S., Dudley, D.T., Herrera, R., Van Becelaere, K., Wiland, A., Gowan, R.C., Tecle, H., Barrett, S.D., Bridges, A., Przybranowski, S., et al. (1999). Blockade of the MAP kinase pathway suppresses growth of colon tumors in vivo. *Nat. Med.* **5**, 810–816.
- Solit, D.B., and Rosen, N. (2011). Resistance to BRAF inhibition in melanomas. *N. Engl. J. Med.* **364**, 772–774.
- Solit, D.B., Garraway, L.A., Pratils, C.A., Sawai, A., Getz, G., Basso, A., Ye, Q., Lobo, J.M., She, Y., Osman, I., et al. (2006). BRAF mutation predicts sensitivity to MEK inhibition. *Nature* **439**, 358–362.
- Sosman, J.A., Kim, K.B., Schuchter, L., Gonzalez, R., Pavlick, A.C., Weber, J.S., McArthur, G.A., Hutson, T.E., Moschos, S.J., Flaherty, K.T., et al. (2012). Survival in BRAF V600-mutant advanced melanoma treated with vemurafenib. *N. Engl. J. Med.* **366**, 707–714.
- Straussman, R., Morikawa, T., Shee, K., Barzily-Rokni, M., Qian, Z.R., Du, J., Davis, A., Mongare, M.M., Gould, J., Frederick, D.T., et al. (2012). Tumour micro-environment elicits innate resistance to RAF inhibitors through HGF secretion. *Nature* **487**, 500–504.
- Tiacci, E., Trifonov, V., Schiavoni, G., Holmes, A., Kern, W., Martelli, M.P., Pucciarini, A., Bigerna, B., Pacini, R., Wells, V.A., et al. (2011). BRAF mutations in hairy-cell leukemia. *N. Engl. J. Med.* **364**, 2305–2315.
- Tsai, J., Lee, J.T., Wang, W., Zhang, J., Cho, H., Mamo, S., Bremer, R., Gillette, S., Kong, J., Haass, N.K., et al. (2008). Discovery of a selective inhibitor of oncogenic B-Raf kinase with potent antimelanoma activity. *Proc. Natl. Acad. Sci. USA* **105**, 3041–3046.
- Wellbrock, C., Karasarides, M., and Marais, R. (2004a). The RAF proteins take centre stage. *Nat. Rev. Mol. Cell Biol.* **5**, 875–885.
- Wellbrock, C., Ogilvie, L., Hedley, D., Karasarides, M., Martin, J., Niculescu-Duvaz, D., Springer, C.J., and Marais, R. (2004b). V599EB-RAF is an oncogene in melanocytes. *Cancer Res.* **64**, 2338–2342.
- Wilson, T.R., Fridlyand, J., Yan, Y., Penuel, E., Burton, L., Chan, E., Peng, J., Lin, E., Wang, Y., Sosman, J., et al. (2012). Widespread potential for growth-factor-driven resistance to anticancer kinase inhibitors. *Nature* **487**, 505–509.